

ELAN

Technologies

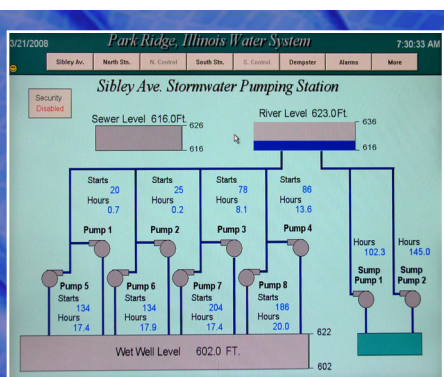
Inc.



Park Ridge

River Level Monitoring

CASE STUDY



- Real-Time River Level
- MDS NET IO
- Less Maintenance
- Solar SCADA-IN-A-BOX™
- Ultrasonic Sensor
- Plasti-Fab FRP Gage

ELAN Technologies
14627 Edison Drive
New Lenox, IL 60451

Phone: 815-463-8105
Fax: 815-463-8106

www.ELANTechnologies.net

Park Ridge Background

Park Ridge, Illinois is located fifteen miles northwest of Chicago with a population of over 37,000. The City of Park Ridge utilizes an MDS radio based SCADA system that monitors the fresh water supply system, three wastewater lift stations and one storm water management station. This picturesque suburb's west border is partially formed by the Des Plaines River. On many occasions the river has risen during excessive rain storms threatening the residents whose homes are near the river. The City of Park Ridge monitors the river level through the storm water management station transmitting the information to their central SCADA computer and then on to the City manager's office.

Until July of 2007 the river level was monitored using a bubbler system with a small copper pipe running underground from the storm water station to the river bottom. The copper pipe failed. The City of Park Ridge could no longer monitor the river level preventing them from reacting quickly during a high water event. The expense of excavating and replacing the copper tube was prohibitive. The City turned to Elan Technologies for a solution to this problem.

Solutions & Results

Elan Technologies provided and installed a solar powered MDS Solution with an ultrasonic level transmitter. The 4-20ma signal from the radio receiver was tied into the existing SCADA remote at the storm water station. Park Ridge could again monitor the river level and adequately serve their residents.

Elan Technologies was able to leverage the Cities' existing SCADA system while providing a state of the art level monitoring system for the City.

Contact ELAN Technologies

ELAN Technologies offers innovative, custom open channel flow monitoring solutions to meet any flow application and regulatory requirement. When you have a tough application, call ELAN. For information on fixed sewer flow monitoring systems, contact ELAN Technologies on the web at www.ELANTechnologies.net

